



Superior Garage Doors. Built To Last.



PRODUCT CATALOGUE | 2023

nu-styledoorcompany.co.nz

CONTENTS

SECTIONAL DOOR COMPONENTS

ANGLES	4
ADJUSTABLE OFFSET TRACK CLIPS	5
ADJUSTABLE OFFSET SPLICE PLATES	
DOMESTIC FLAG ANGLE	
INDUSTRIAL FLAG ANGLE	
ANTISAGS	
INDUSTRIAL END BEARING	6
DOMESTIC END BEARING	
1" STEEL BEARING	
CENTRE BEARING BRACKETS	
JAMB BRACKETS	7
TRACK SUPPORT BRACKETS	
TOP FIXTURES	
BOTTOM BRACKETS	8
WIRE ROPE & CABLE FITTINGS	9
COUPLER	10
SECTIONAL DOOR CHAIN DRIVE	
CABLE DRUMS	11
FASTENERS	12
14 GAUGE HINGES	13
11 GAUGE HINGES	14-15
SECTIONAL DOOR LOCK PARTS	16
1.5MM STEEL LOCK CABLE	17
COMPLETE LOCK PACK	
LOW HEADROOM SPLICE PLATE	
MOHAIR	
PLASTIC FIN SEAL	
27" PUSHER SPRINGS	
ROLLERS	18
NOVA HUSH	18

CONTENTS

INCH SOLID KEYWAYED SHAFT	19
INCH HOLLOW SHAFT	
1/4" KEY STEEL 75MM	
ALUMINIUM WEATHER STRIP	
CARDBOARD BOX	
CABLE RETAINER SPRING	
SPRINGS	20
SPRING PLUGS	21
RESIDENTIAL HARDWARE BOX	21
TRACK	22-23

ROLLER DOOR COMPONENTS

CHAIN WHEEL	24
CHAIN	
CHAIN GUIDE	
DRUM WHEEL	
DOOR SUPPORT BRACKET	
DOOR STOPS	25
LOCKS	
LOCK BAR GUIDES	
LOCK BARS	
NYLO FELT	
ROLLER DOOR TRACK - A SERIES	26
ROLLER DOOR TRACK - B SERIES	
TRACK LUGS	
SADDLE PARTS - INDUSTRIAL	
SADDLE SET - INDUSTRIAL	27
U BOLT & SADDLE - DOMESTIC	
SPRING CLIP	
ROLLER DOOR COLLAR	
ROLLER DOOR SHAFT	
RESIDENTIAL HARDWARE PACKS	
INDUSTRIAL HARDWARE PACKS	

OTHER

TILT DOOR COMPONENTS / FLASHINGS	
----------------------------------	--

ANGLES



22 INCH HORIZONTAL ANGLE

PRODUCT CODE: SA-1-1

Per Item



PRE-PUNCHED 4000 LONG ANGLE

PRODUCT CODE: SA-1-2

Per Item



PUNCHED ANGLE

30X30X1.55X1200MM

30X30X1.55X2400MM

PRODUCT CODE:

Per Item

SA-2-1

Per Item

SA-2-2



40X40X2.5MM DURAGALV ANGLE

6 METRE LENGTH

PRODUCT CODE: SA-3-1

Per Item



CLIPSTYLE ANGLE

2400MM

3000MM

3600MM

4200MM

4800MM

5400MM

PRODUCT CODE:

Per Item

SA-4-1

Per Item

SA-4-2

Per Item

SA-4-3

Per Item

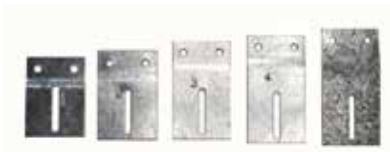
SA-4-4

Per Item

SA-4-5

Per Item

SA-4-6



ADJUSTABLE OFFSET TRACK CLIPS

- #1
- #2
- #3
- #4
- #5
- #6
- #7
- #8
- #9

PRODUCT CODE:

Per Item	SA-5-1
Per Item	SA-5-2
Per Item	SA-5-3
Per Item	SA-5-4
Per Item	SA-5-5
Per Item	SA-5-6
Per Item	SA-5-7
Per Item	SA-5-8
Per Item	SA-5-9



ADJUSTABLE OFFSET SPLICE PLATE

- #8
- #10
- #14
- #16
- #18
- #20

PRODUCT CODE:

Each \$3.24	SA-6-1
Each \$3.40	SA-6-2
Each \$3.56	SA-6-3
Each \$3.76	SA-6-4
Each \$3.97	SA-6-5
Each \$3.97	SA-6-6



INDUSTRIAL FLAG ANGLE (PAIR)

PRODUCT CODE: SA-7-1

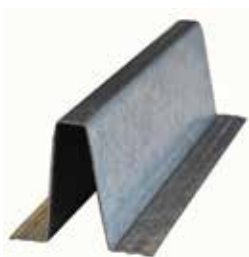
Per Item



DOMESTIC FLAG ANGLE (PAIR)

PRODUCT CODE: SA-7-2

Per Item



**ANTISAG
55X0.95MM**

PRODUCT CODE: SA-8-1

Per Item

**ANTISAG
20X0.75MM**

PRODUCT CODE: SA-8-2

Per Item

PLATES & BRACKETS



INDUSTRIAL END BEARING BRACKETS (PAIR)

PRODUCT CODE: SB-9-1

Per Item



DOMESTIC END BEARING BRACKETS (PAIR)

PRODUCT CODE: SB-9-2

Per Item



1" STEEL BEARING

PRODUCT CODE: SB-10-1

Per Item



CENTRE BEARING BRACKET DOMESTIC

PRODUCT CODE: CBB-11-1

Per Item



HEAVY DUTY CENTRE BEARING BRACKET
SUITS 2" & 3.75" SPRING PLUGS
SAME SIZE AS USA #1 BRACKET
BUT 8MM STEEL THICKNESS

PRODUCT CODE: CBB-11-2

Per Item



USA #1 COMMERCIAL CENTRE BEARING BRACKET
SUITS 2", 3.75" & 6" SPRING PLUGS

PRODUCT CODE: CBB-11-3

Per Item



JAMB BRACKETS

#3 - L=98MM

#8 - L=118MM

PRODUCT CODE:

Per item **SB-12-1**

Per item **SB-12-2**



TRACK SUPPORT BRACKETS

2MM SUPPORT BRACKET

PRODUCT CODE: SB-13-1

Per Item

TOP BRACKETS



DOMESTIC TOP FIXTURE

PRODUCT CODE: SB-14-1

Per Item



COMMERCIAL TOP FIXTURE

PRODUCT CODE: SB-14-2

Per Item



LOW HEADROOM TOP FIXTURE

PRODUCT CODE: SB-14-3

Per Item

BOTTOM BRACKETS



**BB99 DOMESTIC BOTTOM
BRACKET (PAIR)**

PRODUCT CODE: SB-15-1

Per Item



**BB100 INDUSTRIAL BOTTOM
BRACKET (PAIR)**

PRODUCT CODE: SB-15-2

Per Item



**FALL PREVENTION
BRACKET (PAIR)**

PRODUCT CODE: SB-15-3

Per Item

WIRE ROPE



3.2MM STEEL CABLE (PAIR)

2650 CABLE LENGTH (2.2H)
 2950 CABLE LENGTH (2.4H)
 3150 CABLE LENGTH (2.7H)
 3450 CABLE LENGTH (3.0H)
 3750 CABLE LENGTH (3.3H)
 4050 CABLE LENGTH (3.6H)

PRODUCT CODE:

Per Item **SC-16-1**
 Per Item **SC-16-2**
 Per Item **SC-16-3**
 Per Item **SC-16-4**
 Per Item **SC-16-5**
 Per Item **SC-16-6**



GALVANISED SMALL CORD

3MM WIRE ROPE
 4MM WIRE ROPE
 5MM WIRE ROPE

PRODUCT CODE:

Per Item **SC-17-1**
 Per Item **SC-17-2**
 Per Item **SC-17-3**



LOCK WIRE

1.5MM STEEL LOCK CABLE

PRODUCT CODE: SC-18-1

Per Item



STAINLESS STEEL WIRE ROPE

3MM WIRE ROPE
 4MM WIRE ROPE
 5MM WIRE ROPE

PRODUCT CODE:

Per Item **SCC-19-1**
 Per Item **SCC-19-2**
 Per Item **SCC-19-3**



COPPER HAND SWAGE FERRULE

1.5MM COPPER
 3.0MM COPPER
 4.0MM COPPER
 5.0MM COPPER

PRODUCT CODE:

Per Item **SCF-20-1**
 Per Item **SCF-20-2**
 Per Item **SCF-20-3**
 Per Item **SCF-20-4**



ALUMINIUM CABLE FITTINGS

1/8 CRIMPS
 1/8 BUTTON ENDS
 1/8 THIMBLES
 5/32 CRIMPS
 5/32 BUTTON ENDS
 5/32 THIMBLES
 3/16 CRIMPS
 3/16 BUTTON ENDS
 3/16 THIMBLES

PRODUCT CODE:

Per Item **SC-21-1**
 Per Item **SC-21-2**
 Per Item **SC-21-3**
 Per Item **SC-22-1**
 Per Item **SC-22-2**
 Per Item **SC-22-3**
 Per Item **SC-23-1**
 Per Item **SC-23-2**
 Per Item **SC-23-3**



COUPLER

PRODUCT CODE: SC-24-1

Per Item



**CHAIN DRIVE
4:1 REDUCTION**

PRODUCT CODE: SC-25-1

Per Item

DRUMS



400-8 CABLE DRUM (PAIR)
MAX DOOR HEIGHT 2470MM

PRODUCT CODE: SD-26-1
Per Item



400-12 CABLE DRUM (PAIR)
MAX DOOR HEIGHT 3680MM

PRODUCT CODE: SD-26-2
Per Item



5250-18 CABLE DRUM (PAIR)
MAX DOOR HEIGHT 5500MM

PRODUCT CODE: SD-26-3
Per Item



400-54 HI-LIFT DRUMS (PAIR)
MAXIMUM HI-LIFT 1370MM

PRODUCT CODE: SD-26-4
Per Item



5250-54 HI-LIFT DRUMS (PAIR)
MAXIMUM HI-LIFT 1370MM

PRODUCT CODE: SD-26-5
Per Item



850-11 VERTICAL-LIFT DRUMS (PAIR)
MAXIMUM DOOR HEIGHT 3350MM

PRODUCT CODE: SD-26-6
Per Item

FASTENERS



**3/8 50MM TIMBER TEK SCREW
GALVANISED - HEX HEAD**

PRODUCT CODE: SF-27-1
Per Item



**3/8 20MM METAL TEK SCREW
GALVANISED - HEX HEAD**

PRODUCT CODE: SF-27-2
Per Item



**3/8 SPRING ANCHOR BOLT
& NUT**

PRODUCT CODE: SF-27-3
Per Item



TRACK BOLT

PRODUCT CODE: SF-27-4
Per Item



TRACK NUT

PRODUCT CODE: SF-27-5
Per Item



M10 WASHER

PRODUCT CODE: SF-27-6
Per Item



PAN HEAD 8MM BOLT

PRODUCT CODE: SF-27-7
Per Item



8MM SERRATED FLANGE NUT

PRODUCT CODE: SF-27-8
Per Item

HINGES

THE DIMENSIONS OF THE HINGES SHOWN ARE BASED ON INDUSTRY STANDARDS.

Each hinge has a number stamped into the hinge. If you are unable to read this number or cannot find it, measure the distance from the bottom of the hinge to the middle of the top circle on the side of the hinge.

Ensure hinge is on a flat surface when measuring to the middle of the circle.

DISTANCE	HINGE NO.
5/8" - 3/4"	1
7/8" - 1"	2
1-1/8" - 1-1/4"	3
1-3/8" - 1-1/2"	4
1-5/8" - 1-3/4"	5
1-7/8" - 2"	6
2-1/8" - 2-1/4"	7
2-3/8" - 2-1/2"	8
2-5/8" - 2-3/4"	9
2-7/8" - 3"	10
3-1/8" - 3-1/4"	11
3-3/8" - 3-1/2"	12



14 GAUGE #1 HINGE

PRODUCT CODE: SH-28-1

Per Item



14 GAUGE #2 HINGE

PRODUCT CODE: SH-28-2

Per Item



14 GAUGE #3 HINGE

PRODUCT CODE: SH-28-3

Per Item



14 GAUGE #4 HINGE

PRODUCT CODE: SH-28-4

Per Item



14 GAUGE #5 HINGE

PRODUCT CODE: SH-28-5

Per Item



11 GAUGE #1 HINGE

PRODUCT CODE: SH-29-1
Per Item



11 GAUGE #2 HINGE

PRODUCT CODE: SH-29-2
Per Item



11 GAUGE #3 HINGE

PRODUCT CODE: SH-29-3
Per Item



11 GAUGE #4 HINGE

PRODUCT CODE: SH-29-4
Per Item



11 GAUGE #5 HINGE

PRODUCT CODE: SH-29-5
Per Item



11 GAUGE #6 HINGE

PRODUCT CODE: SH-29-6
Per Item



11 GAUGE #7 HINGE

PRODUCT CODE: SH-29-7
Per Item



11 GAUGE #8 HINGE

PRODUCT CODE: SH-29-8
Per Item



11 GAUGE #9 HINGE

PRODUCT CODE: SH-29-9
Per Item



11 GAUGE #10 HINGE

PRODUCT CODE: SH-29-10
Per Item



11 GAUGE #11 HINGE

PRODUCT CODE: SH-29-11
Per Item



11 GAUGE #12 HINGE

PRODUCT CODE: SH-29-12
Per Item

SECTIONAL DOOR LOCK PARTS



T HANDLE

PRODUCT CODE: SL-30-1
Per Item



SNAP LATCH

PRODUCT CODE: SL-30-2
Per Item



STRIKER

PRODUCT CODE: SL-30-3
Per Item



T-HANDLE COLLAR

PRODUCT CODE: SL-30-4
Per Item



INTERNAL HANDLE

PRODUCT CODE: SL-30-5
Per Item



LOCK CAM

PRODUCT CODE: SL-30-6
Per Item

WASHER

PRODUCT CODE: SL-30-7
Per Item



**COPPER HAND SWAGE
FERRULE**

PRODUCT CODE: SCF-20-1
Per Item



1.5MM STEEL LOCK CABLE

PRODUCT CODE: SC-18-1
Per Item



COMPLETE LOCK PACK

PRODUCT CODE: SPL-31-1
Per Item



LOW HEADROOM SPLICE PLATE

PRODUCT CODE: SPG-32-1
Per Item



**MOHAIR
STANDARD**

PRODUCT CODE: SPG-33-1
Per Item

ADHESIVE

PRODUCT CODE: SPG-33-2
Per Item



PLASTIC FIN SEAL
4.85M LENGTH OF PLASTIC
FIN SEAL

PRODUCT CODE: SPG-34-3
Per Item



27" PUSHER SPRINGS

PRODUCT CODE: SPG-35-1
Per Item

ROLLERS



2" ROLLER 4" SHAFT

PRODUCT CODE: SR-36-1

Per Item



2" ROLLER 7" SHAFT

PRODUCT CODE: SR-36-2

Per Item



2" STEEL ROLLER 7" SHAFT

PRODUCT CODE: SR-36-3

Per Item



2" DOUBLE ROLLER 7" SHAFT

PRODUCT CODE: SR-36-4

Per Item



**37MM NOVA HUSH
1200X2400 SHEET**

PRODUCT CODE: NHUSH

Per Item

SHAFT



INCH SOLID KEYWAYED SHAFT

2400MM LONG
3000MM LONG
3600MM LONG

PRODUCT CODE:

Per Item **SSK-37-1**
Per Item **SSK-37-2**
Per Item **SSK-37-3**



INCH HOLLOW SHAFT PER METRE

PRODUCT CODE:

Per Item **SSH-38-3**



1/4" KEY STEEL 75MM

PRODUCT CODE:

Per Item **SKS-39-1**



ALUMINIUM WEATHER STRIP

5.0M LENGTH
BOTTOM BAR WEATHER SEAL
BOTTOM BAR WEATHER SEAL
100M ROLL

PRODUCT CODE:

Per Item **WSA-40-1**
Per Item **BBWS-40-2**
Per Item **BBWSR-40-3**

CARDBOARD BOX

PRODUCT CODE:

Per Item **SBOX-41-1**



CABLE RETAINER SPRING

PRODUCT CODE:

Per Item **SRS-42-1**

SPRINGS



2" SPRINGS

- 4.5MM X 420MM
- 5.0MM X 520MM
- 5.3MM X 564MM
- 5.3MM X 620MM
- 5.6MM X 627MM
- 5.6MM X 730MM
- 6.0MM X 741MM
- 6.0MM X 894MM
- 6.3MM X 762MM
- 6.3MM X 850MM
- 6.3MM X 963MM
- 7.1MM X 1225MM

PRODUCT CODE:

- Per item **SS-43-1**
- Per item **SS-43-2**
- Per item **SS-43-3**
- Per item **SS-43-4**
- Per item **SS-43-5**
- Per item **SS-43-6**
- Per item **SS-43-7**
- Per item **SS-43-8**
- Per item **SS-43-9**
- Per item **SS-43-10**
- Per item **SS-43-11**
- Per item **SS-43-12**



3.75" SPRINGS

- 7.1MM X 1100MM
- 7.6MM X 1200MM
- 8.0MM X 1400MM
- 8.5MM X 1500MM
- 9.0MM X 1700MM

PRODUCT CODE:

- Per item **SS-44-1**
- Per item **SS-44-2**
- Per item **SS-44-3**
- Per item **SS-44-4**
- Per item **SS-44-5**



6" SPRINGS

- 8.0MM X 1290MM
- 8.5MM X 1500MM
- 9.0MM X 1500MM
- 10.0MM X 1600MM

PRODUCT CODE:

- Per item **SS-45-1**
- Per item **SS-45-2**
- Per item **SS-45-3**
- Per item **SS-45-4**

SPRING PLUGS



**2" SPRING PLUGS
(SET)**

PRODUCT CODE: SSP-46-1

Per item



**3.75" SPRING PLUGS
(SET)**

PRODUCT CODE: SSP-46-2

Per item



**6" SPRING PLUGS
(SET)**

PRODUCT CODE: SSP-46-3

Per item

RESIDENTIAL HARDWARE BOX

HARDWARE BOXES

- 2.2X4 PANEL SINGLE
- 2.2X4 PANEL DOUBLE
- 2.4X5 PANEL SINGLE
- 2.4X5 PANEL DOUBLE
- 2.7X5 PANEL SINGLE
- 2.7X5 PANEL DOUBLE
- 3.0X6 PANEL SINGLE
- 3.0X6 PANEL DOUBLE

PRODUCT CODE:

- Per item **SHB-51-1**
- Per item **SHB-51-2**
- Per item **SHB-51-3**
- Per item **SHB-51-4**
- Per item **SHB-51-5**
- Per item **SHB-51-6**
- Per item **SHB-51-7**
- Per item **SHB-51-8**

SECTIONAL DOOR TRACK



12" RADIUS PRE-PUNCHED 2" VERTICAL TRACK

- 2" PRCD VERT TRACK 2.025MTRS (2.2)
- 2" PRCD VERT TRACK 2.225MTRS (2.4)
- 2" PRCD VERT TRACK 2.525MTRS (2.7)
- 2" PRCD VERT TRACK 2.825MTRS (3.0)
- 2" PRCD VERT TRACK 3.125MTRS (3.3)
- 2" PRCD VERT TRACK 3.425MTRS (3.6)
- 2" PRCD VERT TRACK 3.725MTRS (3.9)
- 2" PRCD VERT TRACK 4.025MTRS (4.2)
- 2" PRCD VERT TRACK 4.325MTRS (4.5)
- 2" PRCD VERT TRACK 4.625MTRS (4.8)
- 2" PRCD VERT TRACK 4.925MTRS (5.1)
- 2" PRCD VERT TRACK 5.225MTRS (5.4)

PRODUCT CODE:

- Per item **SVT-47-1**
- Per item **SVT-47-2**
- Per item **SVT-47-3**
- Per item **SVT-47-4**
- Per item **SVT-47-5**
- Per item **SVT-47-6**
- Per item **SVT-47-7**
- Per item **SVT-47-8**
- Per item **SVT-47-9**
- Per item **SVT-47-10**
- Per item **SVT-47-11**
- Per item **SVT-47-12**



12" RADIUS PRE-PUNCHED 2" HORIZONTAL TRACK

- 2" HORIZ TRACK 2.650MTRS 12"R (2.2)
- 2" HORIZ TRACK 2.850MTRS 12"R (2.4)
- 2" HORIZ TRACK 3.150MTRS 12"R (2.7)
- 2" HORIZ TRACK 3.450MTRS 12"R (3.0)
- 2" HORIZ TRACK 3.750MTRS 12"R (3.3)
- 2" HORIZ TRACK 4.050MTRS 12"R (3.6)
- 2" HORIZ TRACK 4.350MTRS 12"R (3.9)
- 2" HORIZ TRACK 4.650MTRS 12"R (4.2)
- 2" HORIZ TRACK 4.950MTRS 12"R (4.5)
- 2" HORIZ TRACK 5.250MTRS 12"R (4.8)
- 2" HORIZ TRACK 5.550MTRS 12"R (5.1)
- 2" HORIZ TRACK 5.850MTRS 12"R (5.4)

PRODUCT CODE:

- Per item **SHT-48-1**
- Per item **SHT-48-2**
- Per item **SHT-48-3**
- Per item **SHT-48-4**
- Per item **SHT-48-5**
- Per item **SHT-48-6**
- Per item **SHT-48-7**
- Per item **SHT-48-8**
- Per item **SHT-48-9**
- Per item **SHT-48-10**
- Per item **SHT-48-11**
- Per item **SHT-48-12**

SECTIONAL DOOR TRACK SETS



12" RADIUS PRE-PUNCHED 2" TRACK SET

- 2" PRCD VERT TRACK SET 2.025MTRS (2.2)
- 2" PRCD VERT TRACK SET 2.225MTRS (2.4)
- 2" PRCD VERT TRACK SET 2.525MTRS (2.7)
- 2" PRCD VERT TRACK SET 2.825MTRS (3.0)
- 2" PRCD VERT TRACK SET 3.125MTRS (3.3)
- 2" PRCD VERT TRACK SET 3.425MTRS (3.6)
- 2" PRCD VERT TRACK SET 3.725MTRS (3.9)
- 2" PRCD VERT TRACK SET 4.025MTRS (4.2)
- 2" PRCD VERT TRACK SET 4.325MTRS (4.5)
- 2" PRCD VERT TRACK SET 4.625MTRS (4.8)
- 2" PRCD VERT TRACK SET 4.925MTRS (5.1)
- 2" PRCD VERT TRACK SET 5.225MTRS (5.4)

PRODUCT CODE:

- Per item **SHVT-49-1**
- Per item **SHVT-49-2**
- Per item **SHVT-49-3**
- Per item **SHVT-49-4**
- Per item **SHVT-49-5**
- Per item **SHVT-49-6**
- Per item **SHVT-49-7**
- Per item **SHVT-49-8**
- Per item **SHVT-49-9**
- Per item **SHVT-49-10**
- Per item **SHVT-49-11**
- Per item **SHVT-49-12**

12" RADIUS PRE-PUNCHED 2" LOW HEADROOM TRACK

- 2" LHR TRACK 2.650MTRS 12"R (2.2)
- 2" LHR TRACK 2.850MTRS 12"R (2.4)
- 2" LHR TRACK 3.150MTRS 12"R (2.7)
- 2" LHR TRACK 3.450MTRS 12"R (3.0)
- 2" LHR TRACK 3.750MTRS 12"R (3.3)
- 2" LHR TRACK 4.050MTRS 12"R (3.6)
- 2" LHR TRACK 4.350MTRS 12"R (3.9)
- 2" LHR TRACK 4.650MTRS 12"R (4.2)
- 2" LHR TRACK 4.950MTRS 12"R (4.5)
- 2" LHR TRACK 5.250MTRS 12"R (4.8)
- 2" LHR TRACK 5.550MTRS 12"R (5.1)
- 2" LHR TRACK 5.850MTRS 12"R (5.4)

PRODUCT CODE:

- Per item **LHR-50-1**
- Per item **LHR-50-2**
- Per item **LHR-50-3**
- Per item **LHR-50-4**
- Per item **LHR-50-5**
- Per item **LHR-50-6**
- Per item **LHR-50-7**
- Per item **LHR-50-8**
- Per item **LHR-50-9**
- Per item **LHR-50-10**
- Per item **LHR-50-11**
- Per item **LHR-50-12**

ROLLER DOOR COMPONENTS



CHAIN WHEEL
PLANETARY CHAIN DRIVE

PRODUCT CODE: PCD-1-1

Per item



CHAIN

PRODUCT CODE: RCN-2-1

Per item



CHAIN GUIDE

PRODUCT CODE: RCG-3-1

Per item



DRUM WHEEL
STEEL DRUM WHEEL

PRODUCT CODE: RD-4-1

Per item

PLASTIC DRUM WHEEL

PRODUCT CODE: RD-4-2

Per item

STEEL MINI DRUM WHEEL

PRODUCT CODE: RD-4-3

Per item



DOOR BRACKET (PAIR)
A-SERIES

PRODUCT CODE:

Per item

RD-5-1

A-SERIES HEAVY DUTY

Per item

RD-5-2



B-SERIES INDUSTRIAL

Per item

RD-5-3



DOOR STOPS

A-SERIES ROLLER DOOR STOP

PRODUCT CODE: RS-6-1

Per item

B-SERIES ROLLER DOOR STOP

PRODUCT CODE: RS-6-2

Per item



LOCKS

CENTRE LOCK

PRODUCT CODE: RL-7-1

Per item



PADBOLT

PRODUCT CODE: RL-7-2

Per item

MINI WAREHOUSE LOCK MKIII

PRODUCT CODE: RL-7-3

Per item



LOCK BAR GUIDE

PRODUCT CODE: RLG-8-1

Per item



LOCK BARS

LOCK BARS 1200MM

LOCK BARS 1300MM

LOCK BARS 1400MM

LOCK BARS 1500MM

LOCK BARS 1625MM

LOCK BARS 2000MM

LOCK BARS 2400MM

PRODUCT CODE:

Per item

RLB-9-1

Per item

RLB-9-2

Per item

RLB-9-3

Per item

RLB-9-4

Per item

RLB-9-5

Per item

RLB-9-6

Per item

RLB-9-7



NYLO FELT

A-SERIES 16MM

PRODUCT CODE:

Per item

RF-10-1



B-SERIES 27MM

Per item

RF-10-2

ROLLER DOOR TRACK

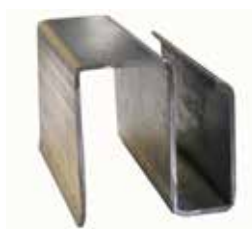


ROLLER DOOR TRACK A-SERIES

- A-GUIDE 2.400 – TO SUIT 2.200 DOOR
- A-GUIDE 2.600 – TO SUIT 2.400 DOOR
- A-GUIDE 2.900 – TO SUIT 2.700 DOOR
- A-GUIDE 3.200 – TO SUIT 3.000 DOOR
- A-GUIDE 3.500 – TO SUIT 3.300 DOOR

PRODUCT CODE:

- Per item **RT-11-1**
- Per item **RT-11-2**
- Per item **RT-11-3**
- Per item **RT-11-4**
- Per item **RT-11-5**



ROLLER DOOR TRACK B-SERIES

- B-GUIDE 2.800 – TO SUIT 2.500 DOOR (STRIP 218X2.0)
- B-GUIDE 3.300 – TO SUIT 3.000 DOOR (STRIP 218X2.0)
- B-GUIDE 3.800 – TO SUIT 3.500 DOOR (STRIP 218X2.0)
- B-GUIDE 4.300 – TO SUIT 4.000 DOOR (STRIP 218X2.0)
- B-GUIDE 4.800 – TO SUIT 4.500 DOOR (STRIP 218X2.0)
- B-GUIDE 5.300 – TO SUIT 5.000 DOOR

PRODUCT CODE:

- Per item **RT-12-1**
- Per item **RT-12-2**
- Per item **RT-12-3**
- Per item **RT-12-4**
- Per item **RT-12-5**



TRACK LUGS

A-SERIES DOMESTIC

PRODUCT CODE: RT-13-1

Per item



B-SERIES INDUSTRIAL

PRODUCT CODE: RT-13-2

Per item



SADDLE PARTS - INDUSTRIAL

TWO IRON CAST SADDLES WITH 2 BOLTS & 2 NUTS

PRODUCT CODE:

- Per item **RS-14-1**
- Per item **RS-14-2**
- Per item **RS-14-3**
- Per item **SF-27-6**
- Per item **RS-14-4**

SADDLE PLATE
70X40X8MM

GRUB SCREW

M10 X 25 X 1.6 ZINC FENDER
WASHER

10MM SPRING WASHER



SADDLE SET - INDUSTRIAL

PRODUCT CODE: RSS-15-1

Per item



U BOLT & SADDLE - DOMESTIC

PRODUCT CODE: RUB-16-1

Per item



SPRING CLIP

PRODUCT CODE: RSC-17-1

Per item



ROLLER DOOR COLLAR

PRODUCT CODE: RDC-18-1

Per item



ROLLER DOOR SHAFT

PRODUCT CODE: RDS-19-1

Per item



**RESIDENTIAL HARDWARE PACKS
A-SERIES**

HARDWARE 2700 HIGH

HARDWARE 3300 HIGH

PRODUCT CODE:

Per item

RHP-20-1

Per item

RHP-20-2



**INDUSTRIAL HARDWARE PACKS
B-SERIES**

HARDWARE 2150-2400 HIGH

HARDWARE 3000-3400 HIGH

HARDWARE 3800-4500 HIGH

HARDWARE 4800-5200 HIGH

PRODUCT CODE:

Per item

IHP-21-1

Per item

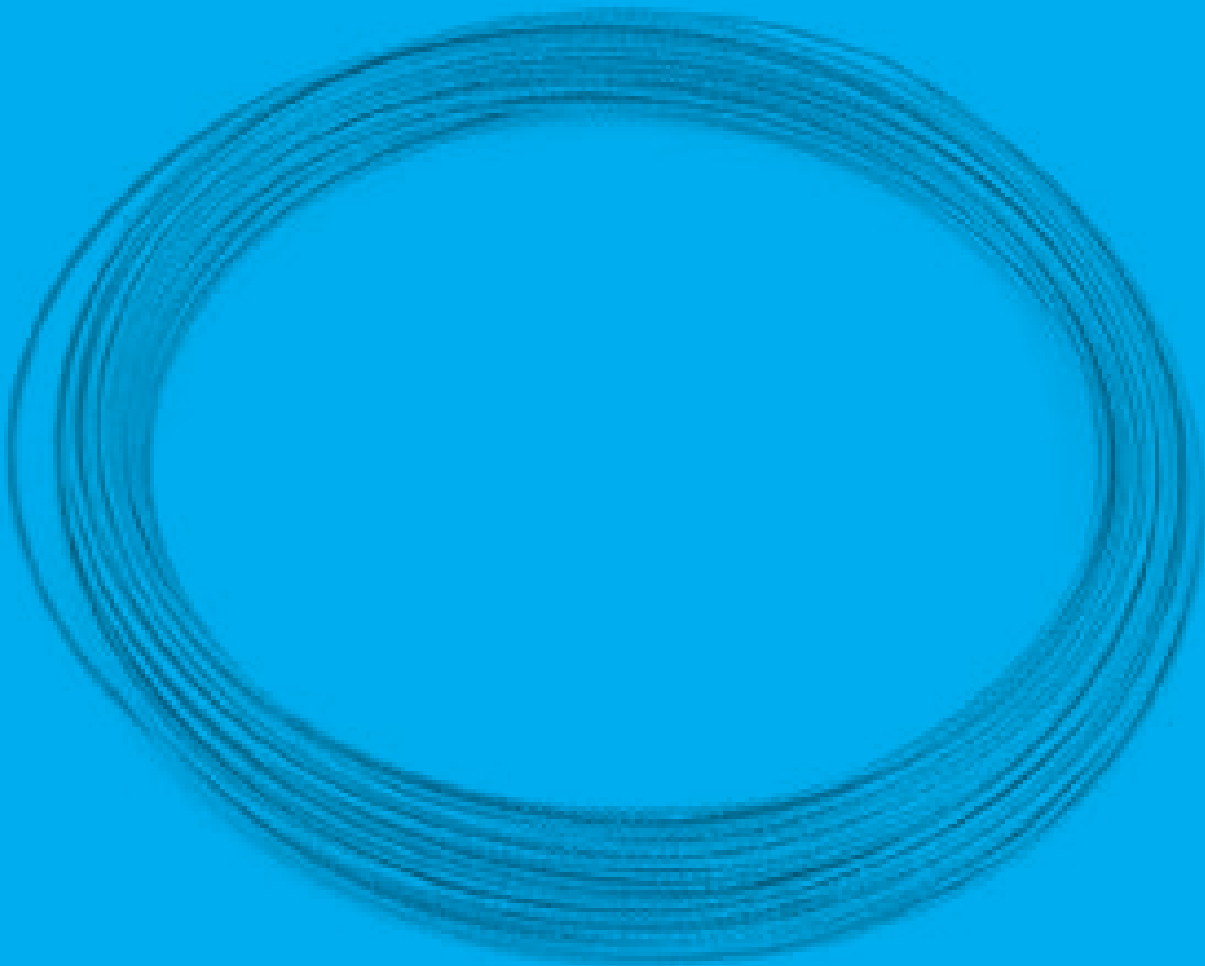
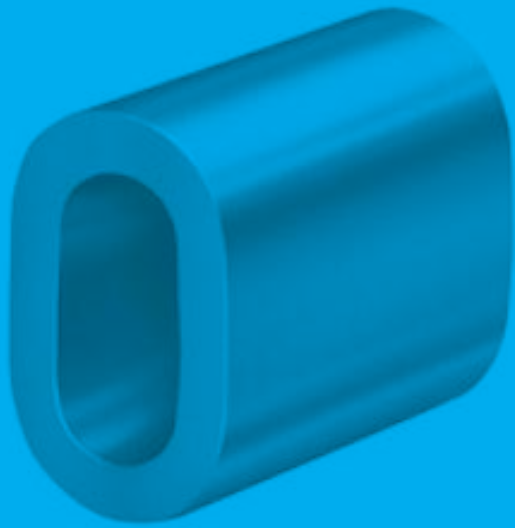
IHP-21-2

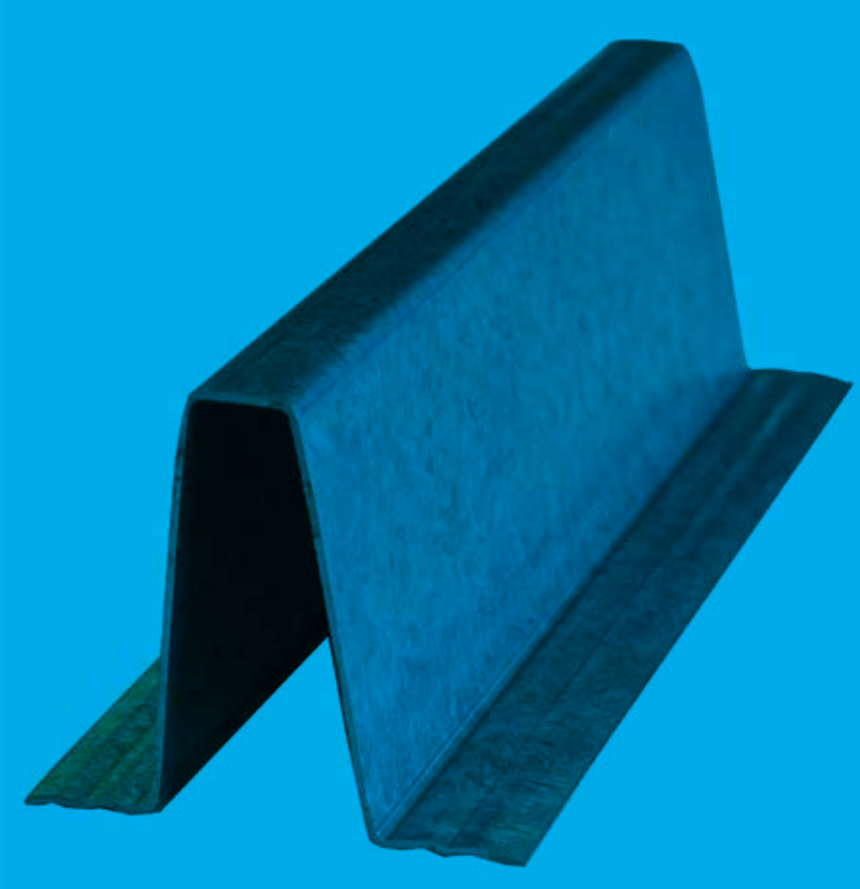
Per item

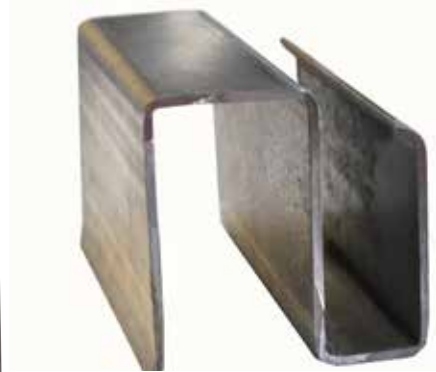
IHP-21-3

Per item

IHP-21-4







Superior Garage Doors. Built To Last.

Nu-Style Door Company
18 Railway Road, PO Box 4230, Palmerston North, New Zealand
Phone 06 356 2376 | 0800 777 702
sales@nsdoors.co.nz | nu-styledoorcompany.co.nz